

Peak Height

13'-11¹/₁₆"

Top of Post

8'-6"

Bottom of Header

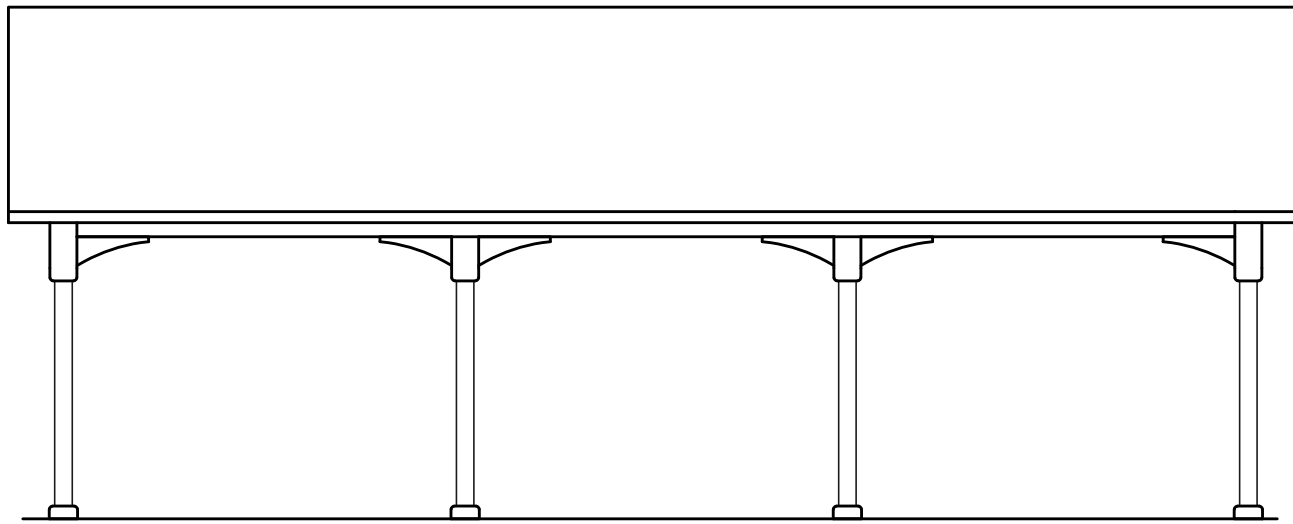
7'-8¹/₄"

Finished Grade

0'-0"

End Elevation

NTS



Peak Height

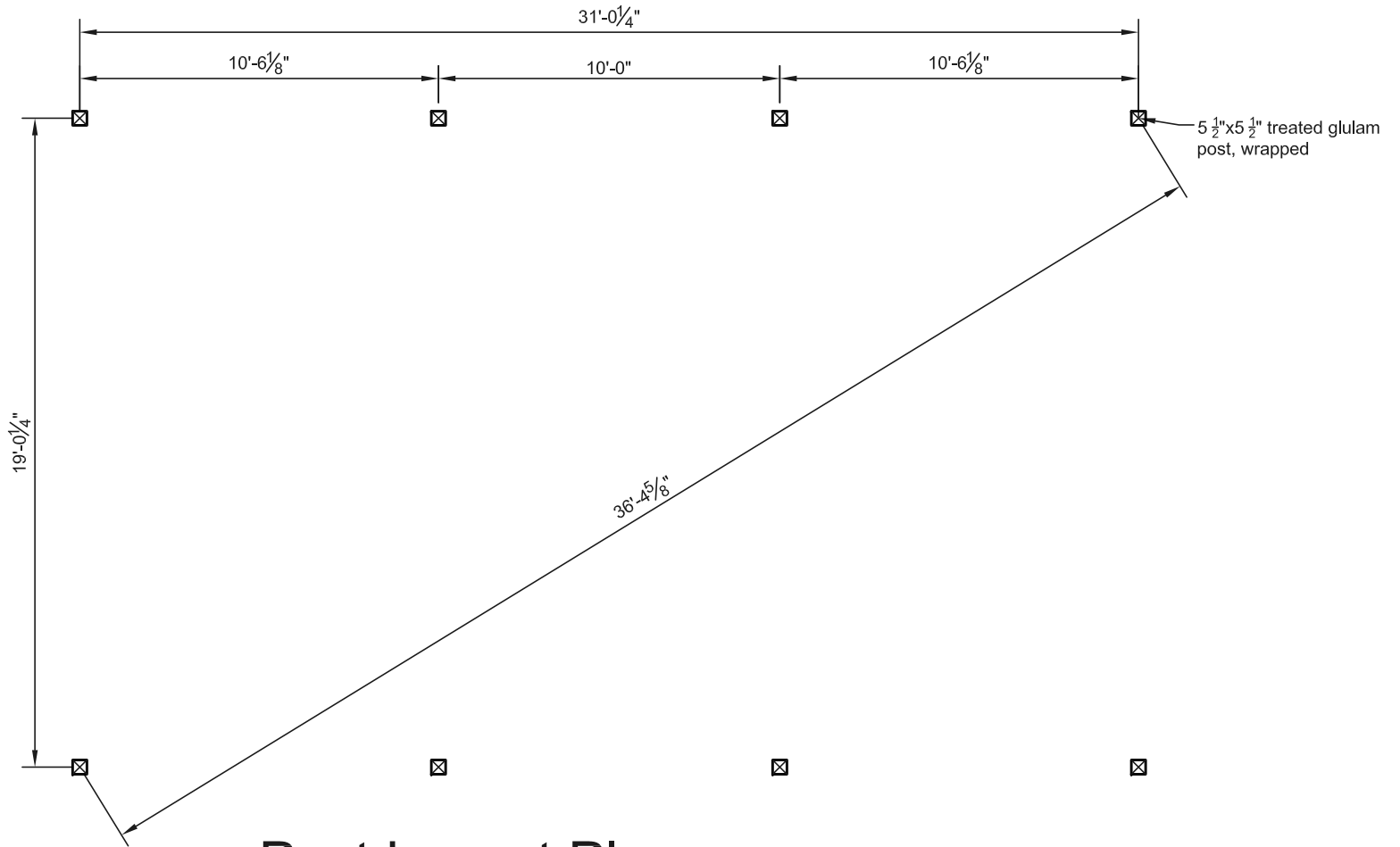
13'-11¹/₁₆"

Finished Grade

0'-0"

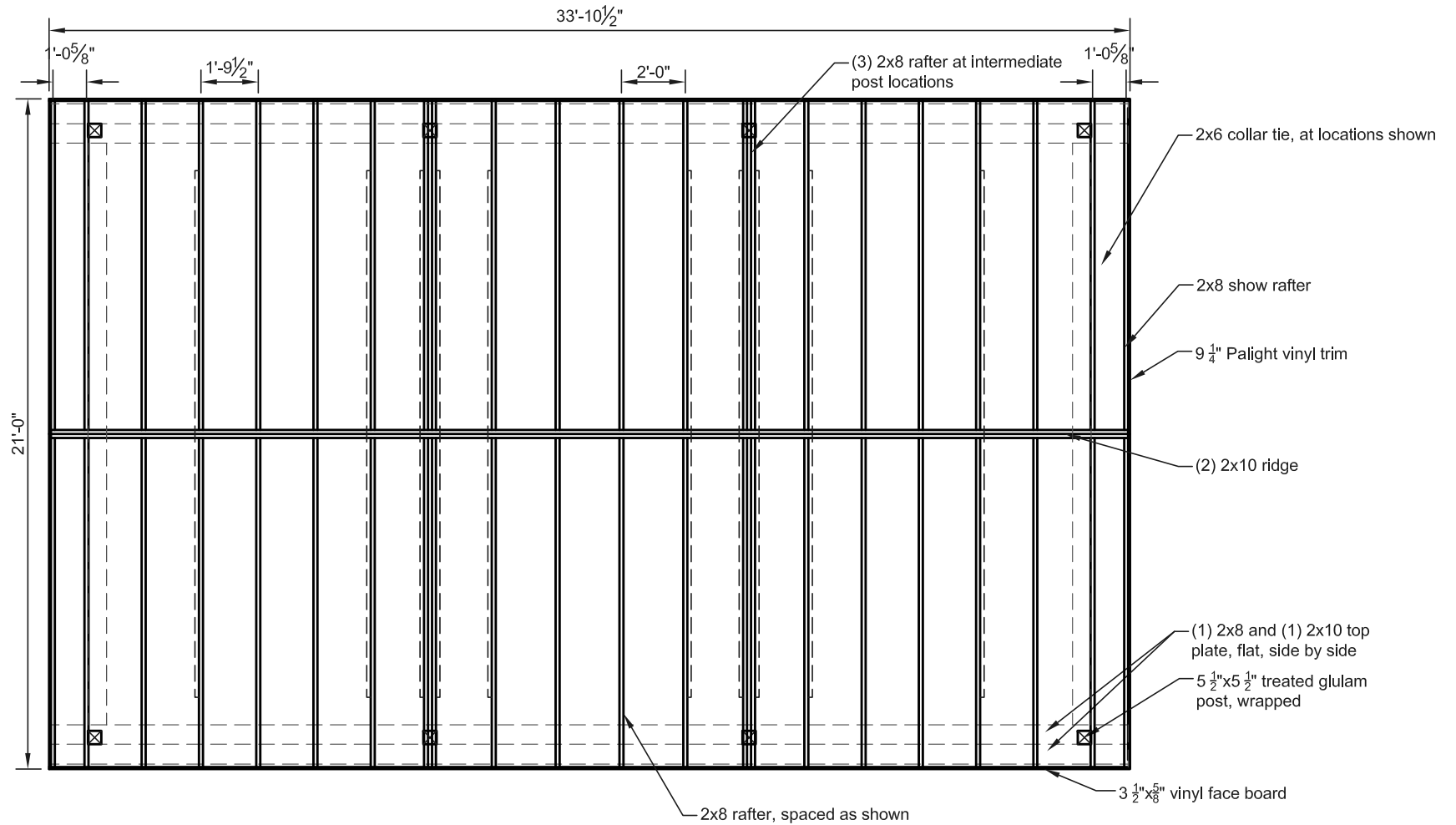
Side Elevation

NTS



Post Layout Plan

NTS



Roof Framing Plan

NTS