

Peak Height
13'-11¹/₁₆"

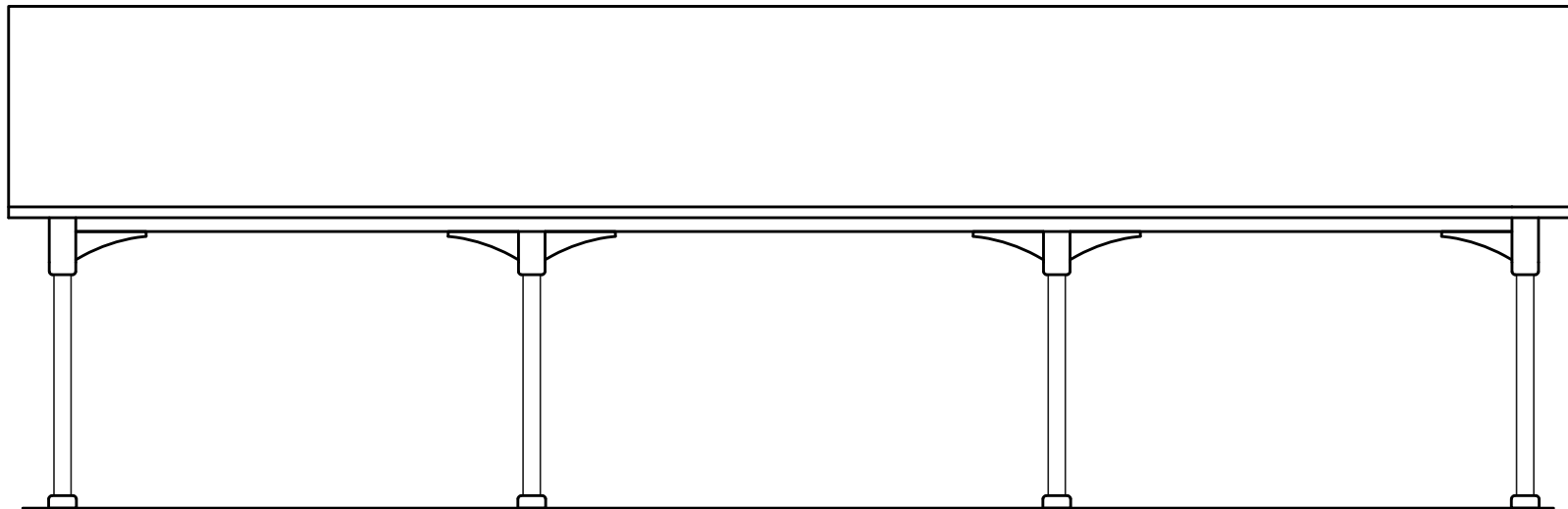
Top of Post
8'-6"

Bottom of Header
7'-8¹/₄"

Finished Grade
0'-0"

End Elevation

NTS

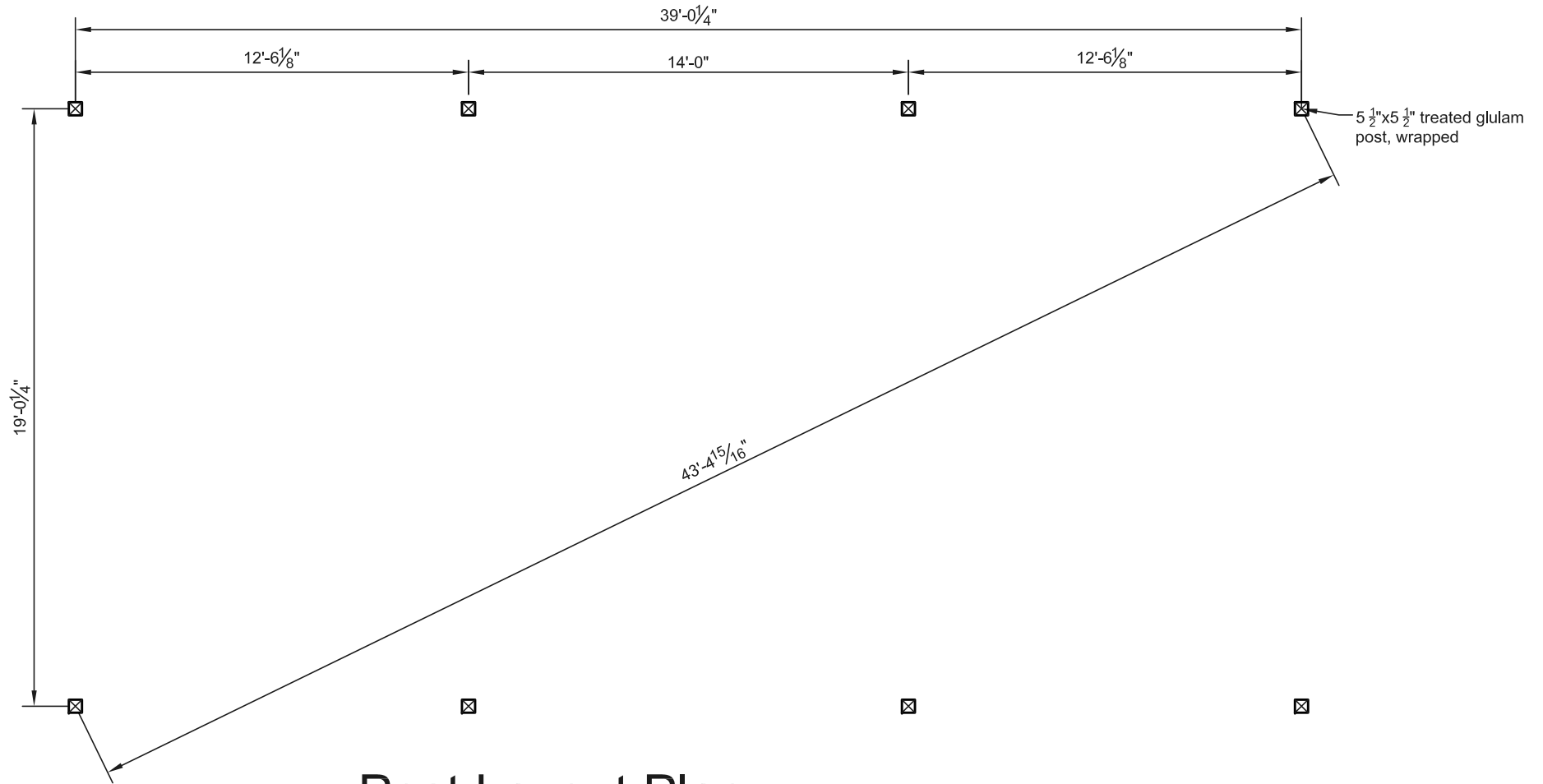


Peak Height
13'-11¹/₁₆"

Finished Grade
0'-0"

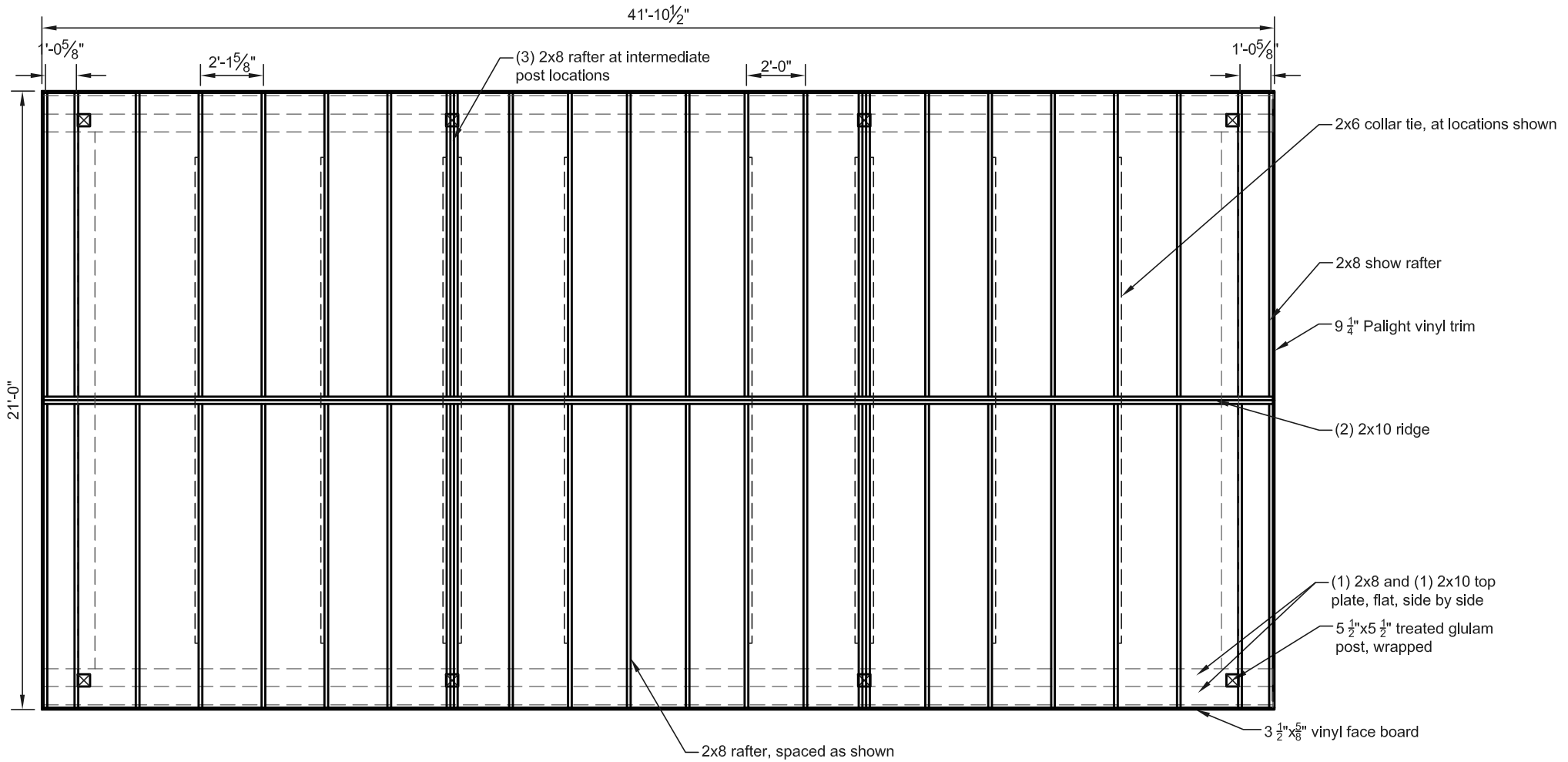
Side Elevation

NTS



Post Layout Plan

NTS



Roof Framing Plan

NTS