

Peak Height  
13'-4<sup>3</sup>/<sub>8</sub>"

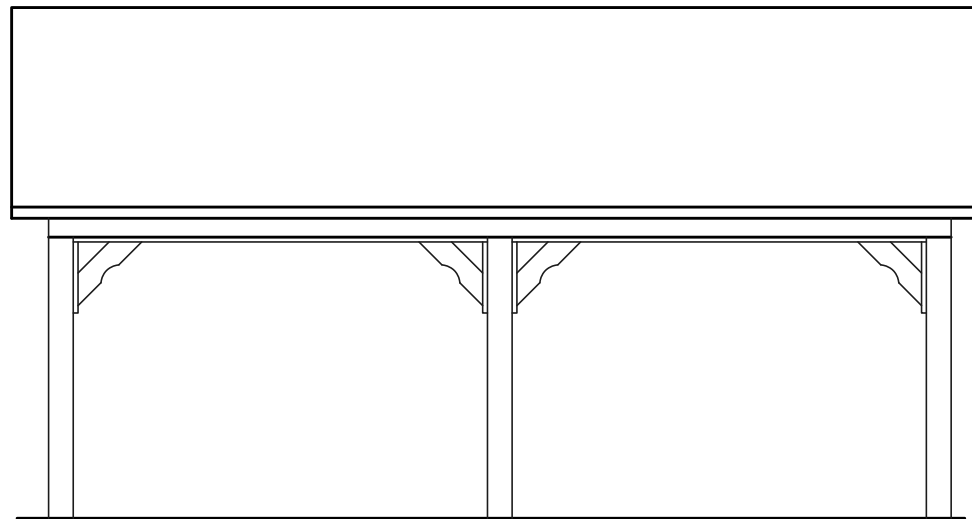
Top of Post  
8'-6"

Bottom of Header  
7'-7<sup>5</sup>/<sub>8</sub>"

Finished Grade  
0'-0"

**End Elevation**

NTS

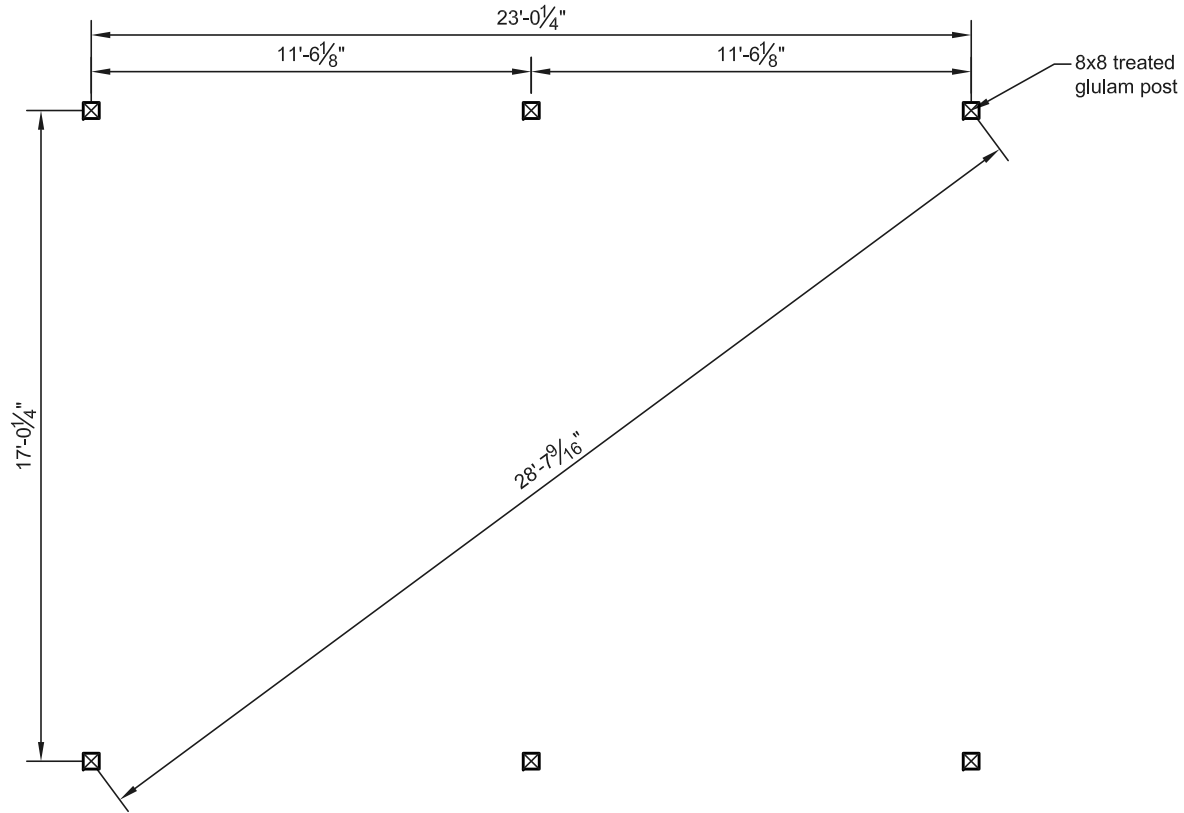


Peak Height  
13'-4<sup>3</sup>/<sub>8</sub>"

Finished Grade  
0'-0"

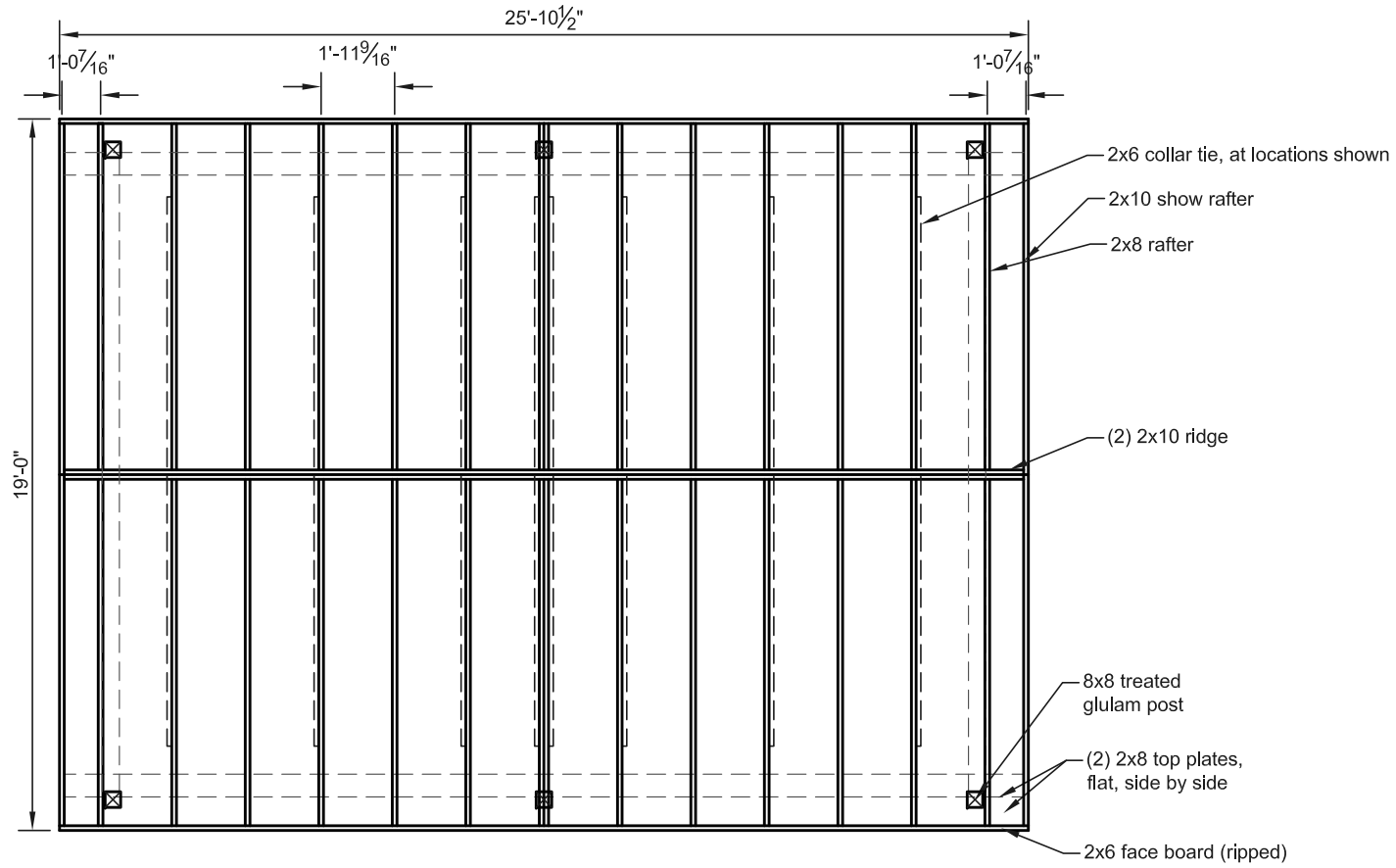
**Side Elevation**

NTS



# Post Layout Plan

NTS



# Roof Framing Plan

NTS